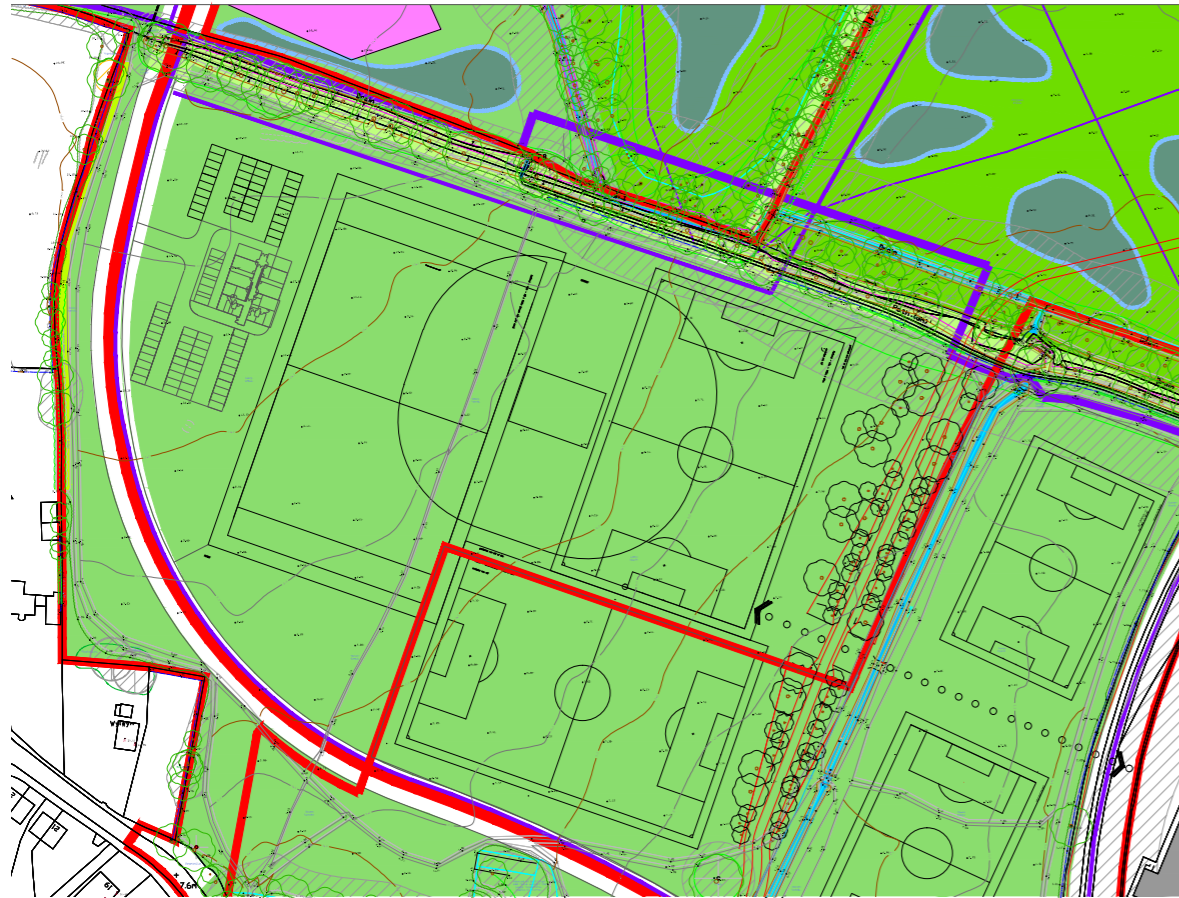
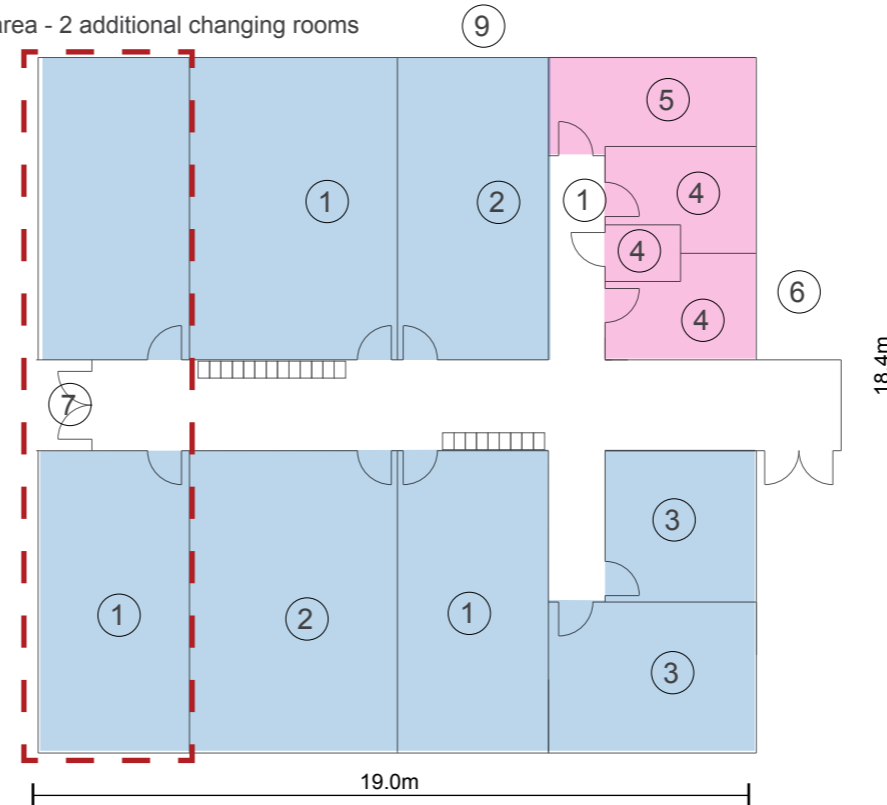


Phase 2 | Option 2 without Club House



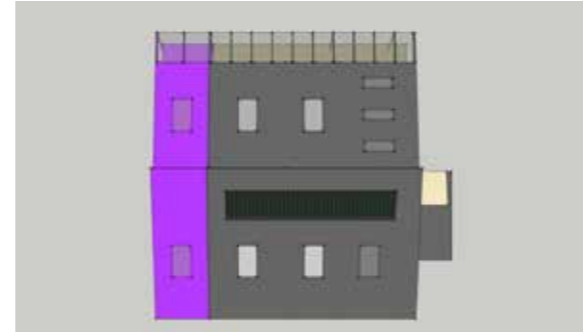
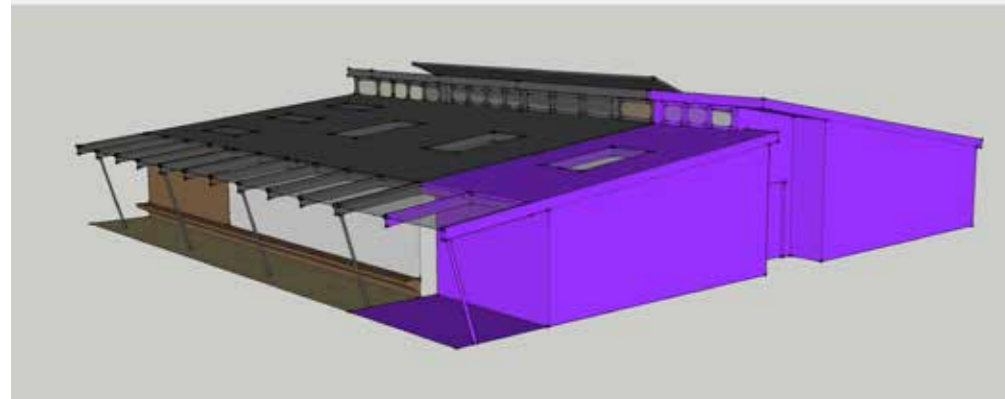
Site Location Plan | 1:2500

Extended area - 2 additional changing rooms



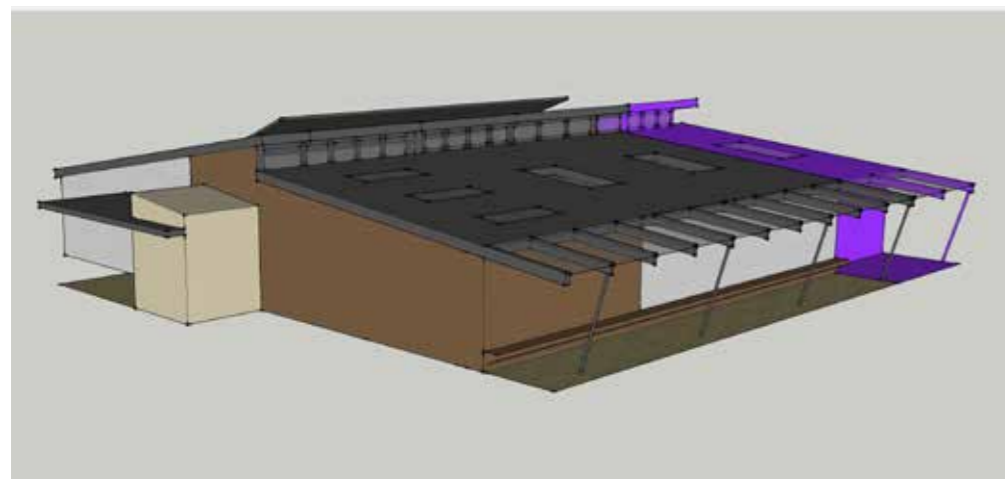
Phase 2 Floor Plan | Scale 1:200

- ① Football / cricket change (15 ppl)
 - ② Rugby change (21 ppl)
 - ③ Officials' change m & f
 - ④ Toilets
 - ⑤ Plant / store
 - ⑥ Main entrance
 - ⑦ Main lobby
 - ⑧ Player's exit / entrance
 - ⑨ External viewing terrace
- Changing Rooms - Players and officials only
 - Ancillary Accommodation - Spectator toilets, storage, plant room



Notes:


- The additional changing rooms are assuming that the junior pitches on the otherside of centurion way will also be used in phase 2, making a total of 6 sports pitches.
- The design is easily adaptable for phase 2 expansion. The purple block shown on the 3D sketch model views represents a bank of 2 additional changing rooms.
- A separate players exit / entrance onto the pitches prevents muddy boots being walked through the main entrance and into the cleaner areas.
- A solar panel on the south facing roof provides solar water heating to increase the efficiency of the building.



Sketch Model Views

CHICHESTER PAVILION by LAVIGNE LONSDALE				
Room No	Room	m ²	number rooms	Comments
Phase 1				
	Public WC	19.5	2	
	Access WC	3	1	
	Changing Rooms (Male & Female)	254	8	access change within each area, includes officials' change
	Storage	13	1	split with plant could be smaller
	Total	289.5	12	
Net Total				
	Circulation	62		Wide corridor for access and potential storage lockers
	Planning (3%)	10		no walls shown
	Engineering	13		included with storage
		85		
TOTAL SPACE		374.5		
Option 2 - PH02 without club house				

Schedule of accommodation



22 Lemon Street, Truro, Cornwall, TR1 2LS & 38 Belgrave Crescent, Camden, Bath, BA1 5JU
 tel: 01872 273118 (truro) 01225 421539 (bath) e.mail: info@lavignelonsdale.co.uk

CLIENT
Miller Homes & Linden Homes

PROJECT
Whitehouse Farm Chichester

DRAWING TITLE
DRAFT Pavilion Option 2 without Club House Phase 02

SCALE	REVISION
as noted	D
PROJECT No 225	DRAWN BY aw
DRAWING No LL-225-SK-507	CHECKED BY ML
DATE DRAWN 09.02.2016	DRAWING STATUS a

a PRELIMINARY	e ISSUED FOR APPROVAL
b ISSUED FOR PLANNING	f ISSUED FOR CONSTRUCTION
c ISSUED FOR INFORMATION	g ISSUED AS BUILT
d ISSUED FOR TENDER/COSTING	